

TEMPRETRIEVER-RH

LOW COST TEMPERATURE & HUMIDITY DATA LOGGER



Features

- Low cost
- User-friendly
- Push button start and stop
- LED alarm indication
- User selectable alarm limits
- Programmable start time
- Reusable
- Miniature size
- 38,400 baud offload speed
- Approved for Delta® Mainline Flights

Applications

- Implement HACCP programs
- Cold chain monitoring
- Verify products are stored and shipped safely
- Monitor refrigerated cars
- Medical and Pharmaceutical
- Meat aging
- Laboratory
- Research and Development
- Replace costly strip chart recorders

To ensure the quality of perishable goods, temperature and humidity monitoring has become essential in applications such as transportation and storage, horticulture, and heating and ventilation. The TempRetriever-RH makes safeguarding against dangerous environments simple.

The TempRetriever-RH is a low cost, reusable, temperature and humidity recorder. No external probes are required to achieve its high performance as both the humidity and temperature sensors are internal to the device. The device can record up to 16,383 readings in its non-volatile memory and coupled with up to a one year battery life, this makes for the perfect temperature and humidity recorder when keeping down costs is paramount.

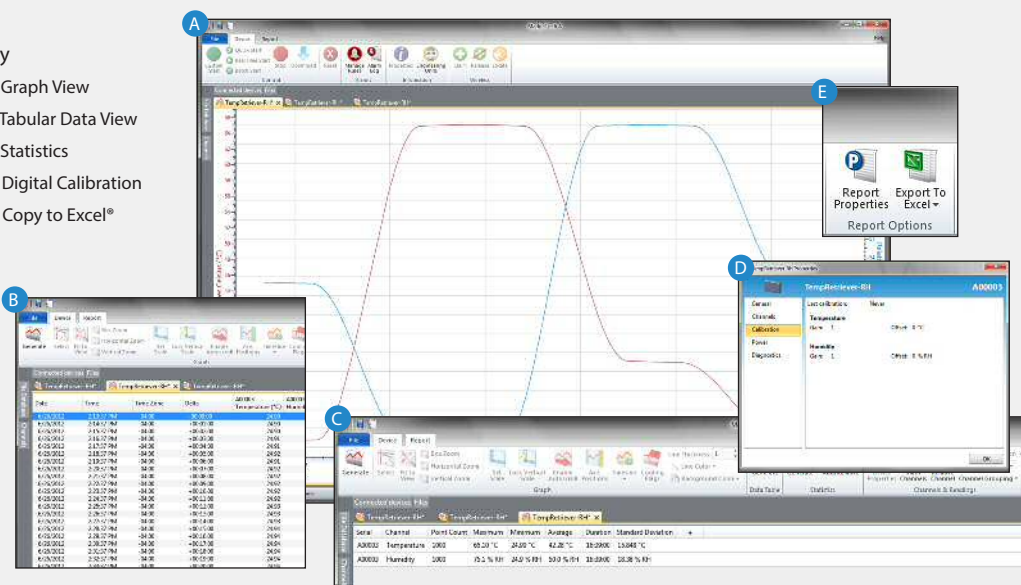
The MadgeTech software includes a full host of features that allows the user to set the start method (i.e. pushbutton, delayed start or start now), start date and time, sample rate, high/low alarm limits, 6-character device ID and a 16-character extended ID. Data can be offloaded and displayed in most common temperature and humidity units. The software will also automatically calculate Mean Kinetic Temperature, dew point, water vapor concentration as well as other useful statistics to simplify analysis. For additional custom analysis, the data can be quickly exported into a MS Excel® spreadsheet with the click of a button.



MADGETECH DATA LOGGER SOFTWARE

Key

- A** Graph View
- B** Tabular Data View
- C** Statistics
- D** Digital Calibration
- E** Copy to Excel®



Software Features:

- Multiple graph overlay
- Statistics
- Digital calibration
- Zoom in/ zoom out
- Lethality equations (F0, PU)
- Mean Kinetic Temperature
- Full time zone support
- Data annotation
- Min./Max./Average lines
- Data table view
- Automatic report generation
- Summary view
- Multilingual

TEMPRETRIEVER-RH SPECIFICATIONS*

Temperature

| | |
|-------------------------|--------------------------------------|
| Temperature Sensor: | Semiconductor |
| Temperature Range: | -40 °C to +80 °C (-40 °F to +176 °F) |
| Temperature Resolution: | 0.1 °C (0.18 °F) |
| Calibrated Accuracy: | ±0.5 °C (0 °C to +50 °C) |

Humidity

| | |
|----------------------|---|
| Humidity Sensor: | Semiconductor |
| Humidity Range: | 0 %RH to 95 %RH |
| Humidity Resolution: | 0.1 %RH |
| Calibrated Accuracy: | ±3.0 %RH (±2 %RH typical at 25 °C) |
| Accuracy Range: | +10 °C to +40 °C (+50 °F to +104 °F), 10 %RH to 80 %RH |
| Response Time: | 90% change in 60 seconds in slow moving air |
| Activity Indicator: | Green LED blinks every 15 seconds to indicate device has been started. |
| Temperature Alarm: | Programmable high and low limits; When logged data reaches or exceeds either limit, red LED blinks every three seconds |
| Memory: | 16,383 readings per channel; 32,766 total readings |

| | |
|------------------------|--|
| Reading Rates: | 1 reading every 5 seconds up to 1 reading every 30 minutes |
| Start Modes: | Software programmable immediate start or delay start up to 6 months in advance; or external pushbutton |
| Time Accuracy: | ±2 minute/month at 25 °C (77 °F). |
| Data Format: | Date and time stamped °C, °F, K, °R; %RH, mg/ml water vapor concentration |
| Calibration: | Digital calibration through software |
| Calibration Date: | Automatically recorded within device |
| Battery Type: | 3.6V lithium battery included, user replaceable |
| Battery Life: | 1 year typical @ 25 °C, 1 minute reading rate |
| Computer Interface: | PC serial or USB (interface cable required); 38,400 baud |
| Software: | XP SP3/Vista/Windows 7/Windows 8 |
| Operating Environment: | -40 °C to +80 °C (-40 °F to +176 °F), 0 %RH to 95 %RH non-condensing |
| Dimensions: | 1.4 in x 2.2 in x 0.6 in (36 mm x 56 mm x 16 mm) |
| Weight: | 0.9 oz (24 g) |
| Approvals: | Approved for carriage on Delta® mainline flights |

BATTERY WARNING: FIRE, EXPLOSION, AND SEVERE BURN HAZARD. DO NOT RECHARGE, DISASSEMBLE, HEAT ABOVE 212 °F, INCINERATE OR EXPOSE CONTENTS TO WATER.

ORDERING INFORMATION

| MODEL | DESCRIPTION |
|-------------------------------------|---|
| TEMPRETRIEVER-RH | Low cost, Reusable, Humidity and Temperature Recorder |
| IFC200 | Software, manual and USB interface cable |
| Calibration Certificate | Calibration Certificate available for data logger |
| LTC-7PN | Replacement battery for TempRetriever-RH |
| MadgeTech 4 Secure Software License | License for MadgeTech Secure Software (unlimited users, 1 license per computer, more licenses are available.) |

ASK ABOUT OUR OTHER DATA LOGGERS

- Temperature
- Humidity
- Pressure
- pH
- Level
- Shock
- LCD Display
- Pulse/Event/State
- Current
- Voltage
- Wireless
- Intrinsically Safe
- Spectral Vibration
- Motion

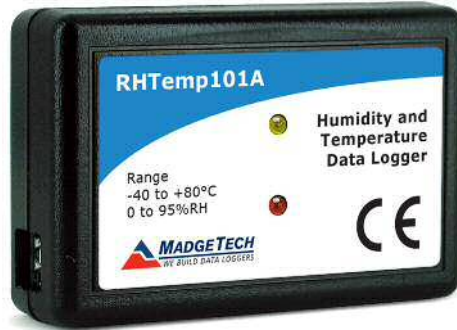
For Quantity Discounts call 603-456-2011 or email sales@madgetech.com

RHTEMP101A HUMIDITY AND TEMPERATURE DATA LOGGER



Features

- 10 Year Battery Life
- 1 Second Reading Rate
- Multiple Start/Stop Function
- Ultra High Speed Download
- 1,000,000 Readings Per Channel, Storage Capacity
- Memory Wrap
- Precision RTD Sensing Element
- Battery Life Indicator
- Optional Password Protection
- Programmable High and Low Alarms
- NIST Traceable
- Field Upgradeable



For many applications that require the monitoring of both ambient temperature and humidity, the RHTemp101A is the ideal solution. Used for warehouse and museum monitoring as well as HVAC studies, the RHTemp101A can measure ambient temperature from -40 °C to 80 °C and humidity from 0 %RH to 95 %RH.

This compact device can be placed virtually anywhere to provide an accurate temperature and humidity record of the environment. Use several RHTemp101A's to capture a thorough mapping of large rooms or facilities.

Benefits

- Simple Setup and Installation
- Minimal Long-Term Maintenance
- Long-Term Field Deployment

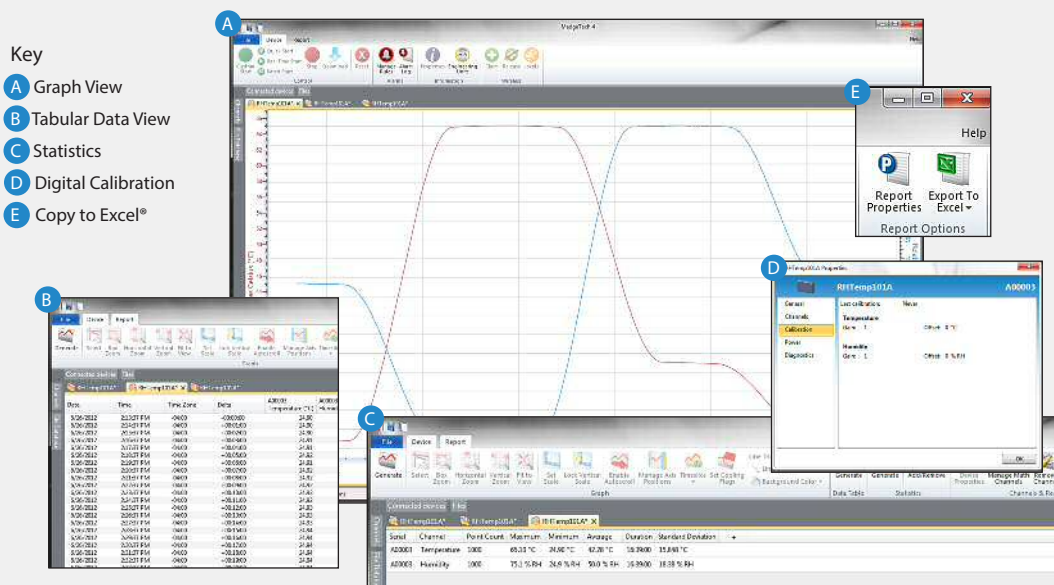
Using the MadgeTech Software, the device can be configured to record at user selected intervals as frequent as one reading every second to as seldom as one reading every 24 hours. With a 10 year battery life and the ability to store up to 1,000,000 readings per channel, the RHTemp101A is perfect for long term data logging studies.

Applications

- Implement HACCP Programs
- HVAC
- Warehouse Monitoring
- Museum Monitoring
- Medical/Pharmaceutical
- General Purpose Humidity Recording

This affordable, low maintenance device is popular for many applications in the medical & pharmaceutical industry, storage monitoring and general purpose humidity recording.

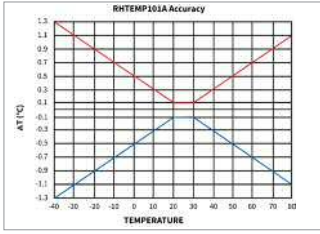
MADGETECH DATA LOGGER SOFTWARE

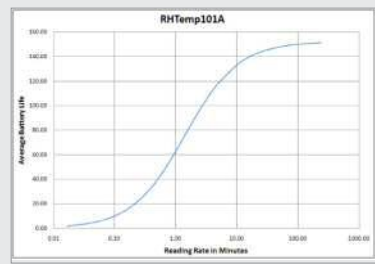


- Software Features:
- Multiple graph overlay
 - Statistics
 - Digital calibration
 - Zoom in/ zoom out
 - Lethality equations (F0, PU)
 - Mean Kinetic Temperature
 - Full time zone support
 - Data annotation
 - Min./Max./Average lines
 - Data table view
 - Automatic report generation
 - Summary view
 - Multilingual

RHTEMP101A SPECIFICATIONS*

*SPECIFICATIONS ARE SUBJECT TO CHANGE WITHOUT NOTICE. SPECIFIC WARRANTY REMEDY LIMITATIONS APPLY. CALL 1-603-456-2011 OR GO TO WWW.MADGETECH.COM FOR DETAILS.

| | |
|--------------------------------------|--|
| Temperature Sensor: | Precision RTD Element |
| Temperature Range: | -40 °C to +80 °C (-40 °F to +176 °F) |
| Temperature Resolution: | 0.01 °C (0.018 °F) |
| Calibrated Accuracy: | ±0.5 °C (±0.9 °F)  |
| Humidity Sensor: | Internal Semiconductor |
| Humidity Range: | 0 %RH to 95 %RH |
| Humidity Resolution: | 0.1 %RH |
| Calibrated Accuracy: | ±3.0 %RH (±2 %RH typical at 25 °C/77 °F) |
| Specified Accuracy Range: | +5 °C to +55 °C (+41 °F to +131 °F); 10 %RH to 90 %RH |
| Reading Rate: | 1 reading every second up to 1 reading every 24 hours |
| Memory: | <ul style="list-style-type: none"> 1,000,000 readings per channel; software configurable memory wrap 500,000 readings in multiple start/stop mode |
| Wrap Around: | Yes |
| Start Modes: | <ul style="list-style-type: none"> Immediate start Delay start up to 18 months Multiple pushbutton start/stop |
| Multiple Start/Stop Mode: | Start and stop the device multiple times without having to download data or communicate with a PC |
| Stop Modes: | <ul style="list-style-type: none"> Manual through software Timed (specific date and time) |
| Multiple Start/Stop Mode Activation: | <p>To start the device: Press and hold the pushbutton for 5 seconds, the green LED will flash during this time. The device has started logging.</p> <p>To stop the device: Press and hold the pushbutton for 5 seconds, the red LED will flash during this time. The device has stopped logging.</p> |
| Real Time Recording: | The device may be used with PC to monitor and record data in real time. |

| | |
|------------------------|---|
| Alarm: | Programmable high and low limits; alarm is activated when humidity reaches or exceeds set limits |
| LED Functionality: | <p>Green LED blinks: 10 second rate to indicate logging 15 second rate to indicate delay start mode</p> <p>Red LED blinks: 10 second rate to indicate low battery and/or full memory 1 second rate to indicate an alarm condition</p> |
| Password Protection: | An optional password may be programmed into the device to restrict access to configuration options. Data may be read out without the password. |
| Calibration: | Digital calibration through software |
| Calibration Date: | Automatically recorded within device |
| Battery Type: | 3.6V lithium battery included; user replaceable |
| Battery Life: | 10 years typical at a 15 minute reading rate  <p>Graph display of the device recording in a 25 °C environment.</p> |
| Data Format: | Date and time stamped °C, °F, K, °R ; %RH, mg/ml water vapor concentration, dew point |
| Time Accuracy: | ±1 minute/month (at 20 °C/68 °F, stand alone data logging) |
| Computer Interface: | USB (interface cable required); 115,200 baud |
| Software: | Version 2.06.3 or higher XP SP3/Vista/Windows 7/Windows 8 |
| Operating Environment: | -40 °C to +80 °C (-40 °F to +176 °F), 0 %RH to 95 %RH non-condensing |
| Dimensions: | 1.4 in x 2.2 in x 0.6 in (36 mm x 56 mm x 16 mm) |
| Weight: | 0.9 oz (24 g) |
| Materials: | ABS Plastic |
| Approvals: | CE |

BATTERY WARNING: FIRE, EXPLOSION, AND SEVERE BURN HAZARD. DO NOT SHORT CIRCUIT, CHARGE, FORCE OVER DISCHARGE, DISASSEMBLE, CRUSH, PENETRATE OR INCINERATE. BATTERY MAY LEAK OR EXPLODE IF HEATED ABOVE 80 °C (176 °F).

ORDERING INFORMATION

| MODEL | DESCRIPTION |
|-------------------------|---|
| RHTEMP101A | Humidity and Temperature Data Logger |
| IFC200 | Software, manual and USB interface cable |
| Calibration Certificate | Calibration Certificate available for data logger |
| LTC-7PN | Replacement battery for RHTemp101A |

ASK ABOUT OUR OTHER DATA LOGGERS

- Temperature
- Humidity
- Pressure
- pH
- Level
- Shock
- LCD Display
- Pulse/Event/State
- Current
- Voltage
- Wireless
- Intrinsically Safe
- Spectral Vibration
- Motion

For Quantity Discounts call 603-456-2011 or email sales@madgetech.com

PRHTEMP101A

PRESSURE, HUMIDITY & TEMPERATURE DATA LOGGER



Features

- 10 Year Battery Life
- Multiple Start/Stop Function
- Ultra High Speed Download
- Memory Wrap
- Battery Life Indicator
- Optional Password Protection
- Programmable High and Low Alarms
- CE Compliant
- Field Upgradable

Benefits

- Simple Setup and Installation
- Minimal Long-Term Maintenance
- Long-Term Field Deployment
- Compact and Portable

Applications

- Museum, Archive and Gallery Artwork Preservation
- Warehouse Monitoring
- Measuring Barometric Pressure in High-Rise Buildings (Elevators)
- Shipping and Transportation
- HVAC
- Clean Rooms
- Clinical Laboratories
- Altitude Validation and Studies



The PRHTemp101A is a pressure, relative humidity and temperature data logger, specifically designed to be compact and portable for use in a variety of applications such as museum and archive preservation, shipping and transportation, warehouse monitoring, HVAC and more.

The PRHTemp101A is MadgeTech's latest addition to the 101A series of low cost, state-of-the-art data loggers. MadgeTech has taken the lead in offering the most advanced, affordable, battery powered data loggers in the world today.

The PRHTemp101A offers a 10 year battery life, 1 second reading rate, multiple start/stop functions, ultra-high speed download capability, optional memory wrap, battery life indicator, optional password protection, programmable high-low alarms and more.

Using the MadgeTech Software, starting, stopping and downloading from the PRHTemp101A is simple and easy for users. Graphical, tabular and summary data is provided for analysis and data can be viewed in °C, °F, °R, K, for the temperature channel, %RH, mg/mL, Dew Point, for the humidity channel and mbar, PSI, inHg, mmHg, atm, Torr, Pa, m, kPa, MPa for the pressure channel. The data can also be automatically exported to Excel® for further calculations.

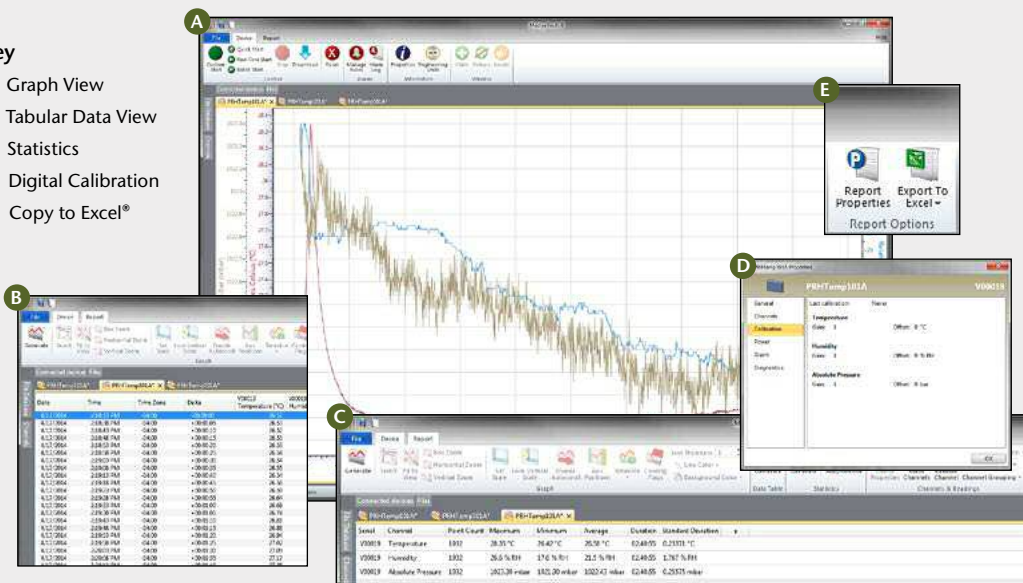
As the leader in low power data logger technology, MadgeTech continuously improves its products and develops solutions to meet ever-changing industry needs. The PRHTemp101A was designed with our customers in mind. MadgeTech offers free firmware upgrades for the life of the product so that data loggers already deployed in the field can grow with new technological developments. Units do not need to be returned to the factory for upgrades, this can be done automatically from any PC with the MadgeTech software.

The design of the PRHTemp101A is second to none when it comes to data logger price and performance. The PRHTemp101A now in stock. Contact one of our sale specialists at (603) 456-2011 or visit www.madgetech.com to order yours today.

MADGETECH DATA LOGGER SOFTWARE

Key

- A** Graph View
- B** Tabular Data View
- C** Statistics
- D** Digital Calibration
- E** Copy to Excel®



Software Features:

- Multiple graph overlay
- Statistics
- Digital calibration
- Zoom in/ zoom out
- Lethality equations (FO, PU)
- Mean Kinetic Temperature
- Full time zone support
- Data annotation
- Min./Max./Average lines
- Data table view
- Automatic report generation
- Summary view
- Multilingual

PRHTEMP101A SPECIFICATIONS*

*SPECIFICATIONS ARE SUBJECT TO CHANGE WITHOUT NOTICE. SPECIFIC WARRANTY REMEDY LIMITATIONS APPLY. CALL 1 (603) 456-2011 OR GO TO WWW.MADGETECH.COM FOR DETAILS.

Pressure

| | |
|--------------------------------------|-----------------------|
| Pressure Sensor: | Piezoresistive |
| Pressure Range: | 250 mbar to 1300 mbar |
| Pressure Resolution: | 0.02 mbar |
| Pressure Calibrated Accuracy: | 10 mbar |

Humidity

| | |
|--------------------------------------|--------------------|
| Humidity Sensor: | Capacitive Polymer |
| Humidity Range: | 0 %RH to 95 %RH |
| Humidity Resolution: | 0.1 %RH |
| Humidity Calibrated Accuracy: | 3 %RH |

Temperature

| | |
|--------------------------------|--------------------------------------|
| Temperature Sensor: | RTD |
| Temperature Range: | -40 °C to +80 °C (-40 °F to +176 °F) |
| Temperature Resolution: | 0.01 °C |
| Calibrated Accuracy: | ±0.5 °C |

General

| | |
|-----------------------------|--|
| Reading Rate: | 1 reading every second up to 1 reading every 24 hours. |
| Memory: | <ul style="list-style-type: none"> • 688,128 readings • 412,876 readings (manual or trigger mode) |
| Wrap Around: | Yes |
| Start Modes: | <ul style="list-style-type: none"> • Immediate start • Delay start up to 18 months • Multiple pushbutton start/stop |
| Stop Modes: | <ul style="list-style-type: none"> • Manual through software • Timed (specific date and time) |
| Real Time Recording: | The device may be used with a PC to monitor and record data in real time. |

| | |
|-------------------------------|---|
| Alarm: | Programmable high and low limits; alarm is activated when recording environment reaches or exceeds set limits. (Pressure channel only) |
| LED Functionality: | <p>Green LED blinks:</p> <ul style="list-style-type: none"> • 10 second rate to indicate logging • 15 second rate to indicate delay start mode/ Standby (Waiting to start) <p>Red LED blinks:</p> <ul style="list-style-type: none"> • 10 second rate to indicate low battery and/or full memory • 1 second to indicate alarm condition met |
| Password Protection: | An optional password may be programmed into the device to restrict access to configuration options. Data may be read without the password. |
| Engineering Units: | Native measurement units can be changed to display measurement units of another type. |
| Calibration: | Digital calibration through software. |
| Calibration Date: | Automatically recorded within device. |
| Battery Type: | 3.6V lithium battery included; user replaceable |
| Battery Life: | 10 year battery life typical, at a 15 minute reading rate. |
| Data Format: | Date and time stamped °C, °F, °R, K, %RH, mg/mL, Dew Point, mbar, PSI, inHg, mmHg, atm, Torr, Pa, kPa, m, MPa units specified through software. |
| Time Accuracy: | ±1 minute/month @ 25 °C |
| Computer Interface: | USB (interface cable required); 115,200 baud |
| Software: | XP SP3/Vista/Windows 7/Windows 8 |
| Operating Environment: | -40 °C to +80 °C, 0 %RH to 95 %RH non-condensing, 0.002 PSIA to 100 PSIA |
| Dimensions: | 1.4 in x 2.2 in x 0.6 in (36 mm x 56 mm x 16 mm) |
| Weight: | 0.8 oz (24 g) |
| Materials: | ABS Plastic |
| Approvals: | CE |

BATTERY WARNING: FIRE, EXPLOSION AND SEVERE BURN HAZARD. DO NOT RECHARGE, DISASSEMBLE, HEAT ABOVE 100 °C (212 °F), INCINERATE, CRUSH, OR EXPOSE CONTENTS TO WATER.

ORDERING INFORMATION

| MODEL | DESCRIPTION |
|-------------------------|---|
| PRHTemp101A | Pressure, Humidity and Temperature Data Logger |
| IFC200 | Software, manual and USB Interface cable |
| Calibration Certificate | Calibration Certificate available for data logger |
| LTC-7PN | Replacement battery for PRHTemp101A |

ASK ABOUT OUR OTHER DATA LOGGERS

- Temperature
- Humidity
- Pressure
- pH
- Level
- Shock
- LCD Display
- Pulse/Event/State
- Current
- Voltage
- Wireless
- Intrinsically Safe
- Spectral Vibration
- Motion

For Quantity Discounts call (603) 456-2011 or email sales@madgetech.com

TEMP101A

TEMPERATURE DATA LOGGER



Features

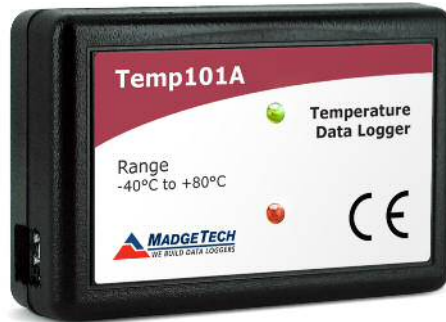
- 10 Year Battery Life
- $\pm 0.5^{\circ}\text{C}$ ($\pm 0.9^{\circ}\text{F}$) Accuracy
- Multiple Start/Stop Function
- Ultra High Speed Download
- 2 Million Reading Storage Capacity
- Memory Wrap
- Precision RTD Sensing Element
- Battery Life Indicator
- Optional Password Protection
- Programmable High and Low Alarms
- Field Upgradeable

Benefits

- Simple Setup and Installation
- Minimal Long-Term Maintenance
- Long-Term Field Deployment

Applications

- Cold Chain
- Refrigerator and Freezer Monitoring
- Vaccine Monitoring
- Warehouse Mapping
- HVAC
- General Purpose Temperature Recording



The Temp101A is second to none in the compact, portable and low cost data logger class. This device can measure and record ambient temperature from -40°C to 80°C and is approximately the size of a matchbox which allows for easy placement even in tight spaces.

The Temp101A features a pushbutton start/stop on the device or can be configured to start

and stop using the MadgeTech Data Logger Software, with the ability to schedule a delayed start up to eighteen months in advance. These features combined with the ability to store up to 2,000,000 readings makes the Temp101A the ideal solution for long term temperature deployment and monitoring cycles.

Some common applications for the Temp101A include but are not limited to cold chain and shipping applications, warehouse and facility mapping, HVAC or refrigerator and freezer monitoring.

MADGETECH DATA LOGGER SOFTWARE

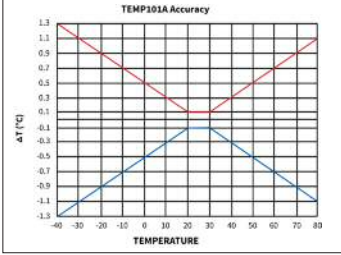
Key

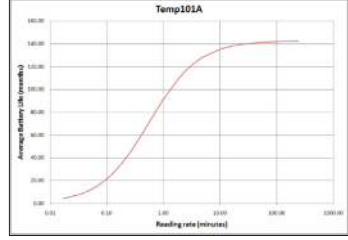
- A** Graph View
- B** Tabular Data View
- C** Statistics
- D** Digital Calibration
- E** Copy to Excel®

Software Features:

- Multiple graph overlay
- Statistics
- Digital calibration
- Zoom in/ zoom out
- Lethality equations (F0, PU)
- Mean Kinetic Temperature
- Full time zone support
- Data annotation
- Min./Max./Average lines
- Data table view
- Automatic report generation
- Summary view
- Multilingual

TEMP101A SPECIFICATIONS*

| | |
|--------------------------------------|--|
| Temperature Sensor: | Precision RTD Element |
| Temperature Range: | -40 °C to +80 °C (-40 °F to +176 °F) |
| Temperature Resolution: | 0.01 °C (0.018 °F) |
| Calibrated Accuracy: | ±0.5 °C (±0.9 °F)  |
| Reading Rate: | 1 reading every second up to 1 reading every 24 hours |
| Memory: | <ul style="list-style-type: none"> 2,000,000 readings; software configurable memory wrap 660,000 readings in multiple start/stop mode |
| Wrap Around: | Yes |
| Start Modes: | <ul style="list-style-type: none"> Immediate start Delay start up to 18 months Multiple pushbutton start/stop |
| Stop Modes: | <ul style="list-style-type: none"> Manual through software Timed (specific date and time) |
| Multiple Start/Stop Mode: | Start and stop the device multiple times without having to download data or communicate with a PC |
| Multiple Start/Stop Mode Activation: | <p>To start the device: Press and hold the pushbutton for 5 seconds, the green LED will flash during this time. The device has started logging.</p> <p>To stop the device: Press and hold the pushbutton for 5 seconds, the red LED will flash during this time. The device has stopped logging.</p> |
| Real Time Recording: | The device may be used with PC to monitor and record data in real time |
| Alarm: | Programmable high and low limits; alarm is activated when temperature reaches or exceeds set limits |

| | |
|------------------------|---|
| LED Functionality: | <p>Green LED blinks:</p> <ul style="list-style-type: none"> 10 second rate to indicate logging 15 second rate to indicate delay start mode <p>Red LED blinks:</p> <ul style="list-style-type: none"> 10 second rate to indicate low battery and/or full memory 1 second rate to indicate an alarm condition |
| Password Protection: | An optional password may be programmed into the device to restrict access to configuration options. Data may be read out without the password. |
| Calibration: | Digital calibration through software |
| Calibration Date: | Automatically recorded within device |
| Battery Type: | 3.6V lithium battery included; user replaceable |
| Battery Life: | 10 years typical at a 15 minute reading rate  <p>Graph display of the device recording in a 25 °C environment.</p> |
| Data Format: | Date and time stamped °C, °F, K, °R |
| Time Accuracy: | ±1 minute/month (at 20 °C/60 °F, stand alone data logging) |
| Computer Interface: | USB (interface cable required); 115,200 baud |
| Software: | Version 2.06.3 or higher/XP SP3/Vista/Windows 7/Windows 8 |
| Operating Environment: | -40 °C to +80 °C (-40 °F to +176 °F), 0 %RH to 95 %RH non-condensing |
| Dimensions: | 1.4 in x 2.2 in x 0.6 in (36 mm x 56 mm x 16 mm) |
| Weight: | 0.8 oz (24 g) |
| Materials: | ABS Plastic |
| Approvals: | CE |

BATTERY WARNING: FIRE, EXPLOSION, AND SEVERE BURN HAZARD. DO NOT SHORT CIRCUIT, CHARGE, FORCE OVER DISCHARGE, CRUSH, PENETRATE, OR INCINERATE. BATTERY MAY LEAK OR EXPLODE IF HEATED ABOVE 80 °C (176 °F).

*SPECIFICATIONS ARE SUBJECT TO CHANGE WITHOUT NOTICE. SPECIFIC WARRANTY REMEDY LIMITATIONS APPLY. CALL 1-603-456-2011 OR GO TO WWW.MADGETECH.COM FOR DETAILS.

ORDERING INFORMATION

| MODEL | DESCRIPTION |
|-------------------------|---|
| TEMP101A | Temperature Data Logger |
| IFC200 | Software, manual and USB interface cable |
| Calibration Certificate | Calibration Certificate available for data logger |
| LTC-7PN | Replacement battery for Temp101A |

ASK ABOUT OUR OTHER DATA LOGGERS

- Temperature
- Humidity
- Pressure
- pH
- Level
- Shock
- LCD Display
- Pulse/Event/State
- Current
- Voltage
- Wireless
- Intrinsically Safe
- Spectral Vibration
- Motion

For Quantity Discounts call 603-456-2011 or email sales@madgetech.com